

Vol. 10, No. 1 January 2009

North Dakota Simmental Scene

Official Publication of the North Dakota Simmental Association



North Dakota Simmental Association
6050 Old Highway 2
Berthold, ND 58718

PRESORTED
FIRST CLASS
U.S. Postage
PAID
Permit No. 580
Manhattan, KS

TNT SIMMENTALS

24th Annual "Genetic Explosion" Sale
 Friday, **FEBRUARY 13, 2009**
 1:00 pm CST • At the Ranch • 5 mi. South of Almont, ND

The **MOST POWERFUL** set of bulls ever offered! Your **COMMERCIAL BULL HEADQUARTERS**, along with **BREED-LEADING HERDSIRES!** They are **THICK** and **DEEP** – All backed by the **TNT 100% GUARANTEE!**

Selling Approximately
160 Bulls

Purebred Black Sim
 3/4, 1/2 & 1/4 SimAngus

Purebred Red Sim
 3/4, 1/2 & 1/4 SimAngus

Purebred Red Angus



U210
 TNT Knockout R206 x New Dimension 903J
Plus, four full brothers sell!
 (Gunner's dam)



U303
 TNT Gunner N208 x BUF CRK Chf 824-1658



U238
 SAV Final Answer 0035 x TNT Hemi N267



U297
 OHRR Dakota Copper 29K x Cheyenne B221L



U263
 Mr NLC Superior S6018 x TNT Five Star P275
 (Homo polled)



U321
 TNT Gunner N208 x Remington Red Label HR



U310
 Mr NLC Superior S6018 x SAV 004 Density 4336



U324
 TNT Top Gun R244 x SRS Fortune 500



U414
 LCOC-GLXY Yield Grade 390 x SAC Mr MT 73G



U379
 TNTS Big League R242 x Remington Red Label HR

- Volume discounts!
- Ultrasound and performance data along with current EPDs will be available!
- Majority homozygous polled!
- All reds are non-diluters!
- All blacks will be homozygous- or heterozygous-black verified!
- Females for sale private treaty!

For catalog or DVD, contact

TNT SIMMENTAL RANCH

Kevin & Lynette Thompson

5125 53rd St • Almont, ND 58520-9731

(701) 843-8454 • (701) 843-7043 (fax)

kevinandlynette@westriv.com • www.tntsimmentals.com

Live internet bidding at www.edgecast.com.

Just 15 mi. south of I-94 Exit 123 • Visitors always welcome!

North Dakota Simmental Association Board of Directors

Pat Thorson, President

16644 51st Street SE
Kindred, ND 58051
701-371-8230

Greg Myers

12066 57th Street SE
Kathryn, ND 58049
701-924-8224

Erika Kenner, Vice President

5606 57th Street NE
Leeds, ND 58346
406-581-1188

Robert Gannaway

14246 A 56th Street NW
Williston, ND 58801
701-875-6267

Bob Grant, Secretary/Treasurer

6050 Old Highway 2
Berthold, ND 58718
701-453-3218

Luke Keller

1573 County Road 136
Mandan, ND 58554
701-445-7350

Mike Johnson

2262 44th Street
McCanna, ND 58251
701-397-5724

Doug Bichler

130 83rd Street SE
Linton, ND 58552
701-254-4306

JR Aufforth

6647 98th Street NW
Bowbells, ND 58721
701-377-2870

Kevin Elliot

14690 2nd Street SE
Clifford, ND 58016
701-488-2712

Editor's Message...

Happy New Year! I hope everyone had a great Holiday season. What a great time to spend with family indoors! Hopefully 2009 gets back to this 'global warming' we hear so much about.

Congratulations to the consignors and participants of the ND Simmental Classic Sale! The annual Simmental Weekend in Bismarck was again a huge success despite bitterly cold winds and the weather guys telling everyone to stay at home that day.

I would also like to mention to all ND Simmental members that we will be printing a 2009 ND Simmental Directory this spring. Our advertising deadline will be March 1, 2009. This will be a great opportunity to showcase your program in front of a tremendous audience. Please contact myself as soon as possible to reserve your space.

Just ahead of print time we found out that North Dakota will have another Trustee representing us on the ASA Board of Directors. Congratulations to Roger Finke on your recent election. Thank you to all those who supported Roger in this endeavor.

*Sincerely,
Todd Finke*

North Dakota Simmental Scene

A publication of the North Dakota Simmental Association

Todd Finke, Sales
35500 114th Avenue NW
Berthold, ND 58718
701-240-7711
todd@edje.com

The following terms and conditions have been agreed on by the North Dakota Simmental Association Board of Directors and the North Dakota Simmental Scene Committee.

Advertising Space Rates

Size	BW	4C
Full Page	\$400	\$550
½ Page	\$300	\$410
¼ Page	\$200	NA
Business Card	\$150 (per year)	

Advertising Deadlines

Issue	Deadline
November	November 1st
January	December 20th
February	January 20th

Terms

All advertising accounts are due and payable as invoiced. Interest charges of 1% per month will be assessed to accounts that are 30 days past due.

Delinquent Advertiser's Account

Advertisers knowingly and expressly agree and consent that, whenever accounts receivable for an advertiser have not been paid as of 90 days from date involved, advertising privileges will be suspended until full payment has been received.

Copy Changes

Alterations in advertising copy, if requested after closing dates will be permitted only if time allows.

The North Dakota Simmental Association and the North Dakota Simmental Scene reserve the right to refuse any advertising copy at our sole discretion. The North Dakota Simmental Association and the North Dakota Simmental Scene assume no responsibility for the accuracy of the advertising content submitted. Advertisers assume all responsibility for the accuracy and truthfulness of submitted advertising containing pedigrees or statements regarding performance.

Editorial Content

Opinions expressed are those of the writer and not necessarily those of the North Dakota Simmental Association or the North Dakota Simmental Scene. Photographs and manuscripts are welcome, but no responsibility is assumed either while in transit or while in this office.

Produced by EDJE Technologies

Cover photo taken by Byran Leapaldt, Leeds, ND.

Calendar of Events

January 2009

- 12 Edge of the West Female Sale
Mandan, ND
- 19 National Western Simmental Sale The One-Vol. XIII
Denver, CO
- 30 Kjelgaard Simmental Production Sale
McHenry, ND

February 2009

- 3 James Creek Simmentals Private Treaty Bull Sale
Heaton, ND
- 4 Begger's Diamond V Ranch Production Sale
Wibaux, MT
- 6 4E Simmentals' Uppin' the Ante Bull & Female Sale
Bismarck, ND
- 6 Larson's TL Ranch Production Sale
Almont, ND
- 7 Klain Simmental Ranch Annual Production Sale
Turtle Lake, ND
- 9 Haas Ranch Simmental Bull Sale
Mandan, ND
- 10 Bata/Olafson Production Sale
Rugby, ND
- 11 Breeding for the Future Production Sale
Napoleon, ND
- 11 Nelson Livestock Production Sale
Baker, MT
- 12 Lassel/Skillestad Ranches Annual Production Sale
Glendive, MT
- 12 Hoiby Simmentals Annual Production Sale
Rugby, ND
- 13 TNT Simmentals 23rd Annual Genetic Explosion Bull Sale
Almont, ND

- 14 Kenner Simmental Ranch 12th Annual Production Sale
Bismarck, ND
- 15 Rydeen Farms Vision X Sale
Clearbrook, MN
- 15 Northern Plains Simmental Private Treaty Sale
Bowbells, ND
- 16 Dakota Power Bull Sale
Valley City, ND
- 16 Traxinger Simmentals Private Treaty Bull Sale
Claremont, SD
- 17 Keller's Broken Heart Ranch Annual Production Sale
Mandan, ND
- 18 Sys Simmentals Limited Auction Bull Sale
Douglas, ND
- 19 Bichler Johnson Annual Production Sale
Linton, ND
- 21 Ellingson Simmentals Production Sale
Rugby, ND
- 24 Larson's XL Simmental Production Sale
Mandan, ND

March 2009

- 3 Doll Ranch Annual Production Sale
Mandan, ND
- 12 Spring Creek Simmentals Production Sale
Moosomin, SK
- 15 Rebels of the West Bull and Female Sale
Hamiota, MB

April 2009

- 3 Edge of the West Bull Sale
Mandan, ND

HAVING A BULL SALE?

*Email your sale report to todd@edje.com
and have it posted online at
www.northdakotasimmental.com*

16th Annual Production Sale

Thursday, February 12, 2009 • Glendive, MT

Two Great Programs • One Great Sale!

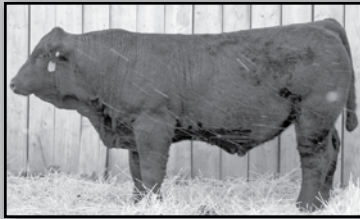
Selling: 150 Simmental Bulls

Polled • Solid Blacks and Solid Reds

Purebred • Simmental/Angus Hybrids • Angus



LRS 44U • Purebred
Sire: LRS Centerpiece 42R
Dam: ES Kilowat KH19
EPDs: 5 1 53 89 0 3 29
CW: 15.5 • YG: .05 • MB: .19
Act. BW: 88 • Adj. WW: 909



SRS 82U • Purebred
Sire: SRS Land Rover L1007
Dam: SRS Franchise F601
EPDs: 7 2 41 68 4 5 26
CW: 5.7 • YG: -.05 • MB: .13
Act. BW: 92 • Adj. WW: 918

Sillestad Ranch Simmentals

Glendive, Montana 59330
Jim and Pat • 406-377-3809
Mike and Jill • 406-377-5871
Patrick & Melissa • 406-377-7531
pmskil@midrivers.com

Lassle Ranch Simmentals

Clay and Marianne Lassle
Glendive, Montana 59330
406-486-5584
email: lrsbeef@midrivers.com
www.lassleranchsimmentals.com

ANNUAL BULL SALE

Wednesday February 11, 2009

at the Ranch, Wibaux, MT

Selling: 100 Bulls

Outstanding Purebred Angus Bulls

Polled and Black Performance Selected Simmental and SimAngus Bulls
Top Notch Red Purebred Simmental and SimAngus Bulls

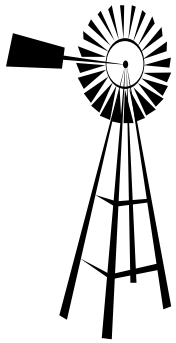


BF M218 SNAKE EYES



Warren • 406-588-3351
Tom & Renee • 406-588-3371
nlesim@midrivers.com

Visit our website: www.nelsonlivestockco.com
for updated bull pictures and information



NORTHERN PLAINS SIMMENTALS

JR & Miranda Aufforth
Bowbells, ND 58721
701-377-2870

3rd Annual Bull Sale

February 15, 2009 • At the Ranch North East of Bowbells

Selling 25 purebred bulls, mostly black, all polled



HC HUMMER

EPDs: 14.8 0.4 38.3 76.9 -.6 2.3 21.1 Stay: 24.1 API:134 TI: 70
BD: 2-23-02



TNT GUNNER

EPDs: 10.0 -.5 35.1 66.0 5.1 8.7 26.3 Stay: 18.2 API:103.3 TI:62.8
BD: 2-22-03

News from the ASA...

SimChoice^{sv}, Other Tools Enhance Profitability **The American Simmental Association is committed to establishing programs designed to assist commercial cattlemen improve their operating margins.**

As many of you know, the American Simmental Association (ASA) and its member breeders are committed to accelerated genetic improvement and have allocated substantial resources over the past decade toward the improvement of beef production and end-product value traits. Our large, structured young sire evaluation program, feed conversion research project and commitment to improving marbling, cutability and tenderness have resulted in considerable genetic improvement for many important traits. By prioritizing profitability and encouraging the use of multiple breeds to take advantage of both heterosis and complementarity, today's Simmental crossbred cattle perform at a documented level of profitability that works for multiple segments of the beef industry. We believe the next logical step toward greater participation in the larger beef business is to develop tools that assist our member's customers to access markets that best suit their products and have the potential to offer premiums for more valuable cattle.

We began this initiative two years ago by promoting an age and source verification program to take advantage of existing premiums for documented age and source and included an identity preservation component in the venture. To order SimChoice^{sv} tags, or for additional information, contact the ASA at (406) 581-7835. The PVP used for the SimChoice^{sv} program is maintained by Micro Beef Technologies and is accessible to all users of Simmental genetics without significant or unnecessary restrictions.

Following the inception of SimChoice, our next customer service foray was to investigate beef marketing grids with specifications that best fit the high value Continental x British cattle that are the primary product of commercial Simmental bull users. There are few cattle in this business that offer the combined value of marbling with cutability that can be produced by the combination of Simmental genetics with British-based cattle. After years of collecting data and improving our products, we felt comfortable endorsing a grid system that paid solid premiums for groups of cattle that were near to or could exceed 70% Choice and higher with 70% USDA Yield Grades 1 or 2. With groups that approach these specifications, the number of "outs" is generally reduced to below 4% with many groups receiving no YG 4 & 5 or "No Roll" discounts. Our 7070 Beef Marketing Grid is currently available through JBS Swift & Co. at its Grand Island, Nebraska, and Greeley, Colorado, facilities. Simmental x Angus and Simmental x Red Angus crossbred cattle combine high quality with high cutability and perform well on most grids. However after evaluating more than a dozen popular marketing options, the 7070 grid paid more premiums more often than the other choices we looked at.

For more information about the 7070 Grid, contact Mark Guge at Two River Cattle Co. (515) 231-6849 or simply go to www.7070beef.com. Since the inception of the 7070 Grid, Simmental influenced cattle harvested have returned an average of \$42 per head premium (not including available age and source premiums) when compared to selling those same cattle for Nebraska Weighted Average quoted prices.

The most recent addition to the SimChoice program is the creation of SimList. Designed to put buyers and sellers of Simmental influenced commercial feeder calves and replacement females together, this service is available free of charge from the American Simmental Association on any of its website options. It is a relatively simple procedure to list cattle to be marketed on this site, with options for representation of your choice and opportunity to provide from simple to significant information regarding details of the offering. The SimList is already receiving substantial traffic from those looking for feeder cattle and replacement females and you will find groups from five to more than 500 head offered nationwide. In addition, there are more groups of high-demand SimAngus cattle listed here than in any other location.

Each of these three programs have proven to be effective independently, but are ultimately designed to work in tandem as a coordinated system to return added value for added value created. It is one thing to create programs with boundaries of breed or color specifications for the benefit of a small number of industry participants, it's another to put programs in place that reward those cattle and products that truly reduce cost of production and generate more income. Whether you are a supplier of feeder cattle, a cattle feeder or add value post harvest, consider combining valuable genetics with these programs designed to create rewards for investing in them.



By Marty Ropp,
ASA Director of
Field Services

Photo Contest

The North Dakota Simmental Association sponsored a photo contest again this year. Pictures were to be color, 8" x 10" and of Simmental cattle. Awards were given for three places in youth and adult divisions. All entered pictures will not be returned and will become the property of NDSA for future use in advertisements.



The winners were announced at the annual banquet held on Friday, December 19, 2008.

To view 2008 entries and winners go to...
www.northdakotasimmental.com

Thanks to all those who participated again this year.
The pictures were wonderful. Well done!

Hoiby Simmental Bullnanza

Selling 40 Red & Black Simmental Bulls

**Thursday,
FEB. 12, 2009**

1:00 pm CT

**Rugby Livestock
Rugby, North Dakota**

You won't see Hoss or Little Joe at this Bullnanza, but you will see 40 high-performance red and black Simmental bulls bred with commercial cattle producers in mind. We invite you to join us for this special event and to preview the offering at the ranch at any time between now and then.



Trademark x Big Country • 7 1 38 66 3 9 28

850



GLS Red Rock x BTS Black Out • 2 2 33 58 6 5 22

885



Freedom x Perfector • 7 1 39 77 7 7 26

824



Trademark x Hart 4 Lane • 8 0 31 55 6 10 25

805



Hoiby's Tamale T724

Year End Champion Simmental Heifer, ND Points Show, 2007-08.
Several black brothers sell.



Hoiby's Laila T722

Year End Champion Commercial Heifer, ND Points Show 2007-08.
Several Brothers Sell

**SIRES
INCLUDE
TRADEMARK
ES VEGAS
RED ROCK
TNT GUNNER**

**Hoiby
Simmental
Ranch**

Lyndon, Shelley,
Paige & Levi Hoiby
7890 101st Ave. NW
McGregor, ND 58755
701/546-4043

Bichler/Johnson

4th Annual "Quality, Not Quantity" Sale

February 19, 2009 • 1:00 PM • Linton Livestock

Selling 40 Simmental & SimAngus Bulls and 10 Open Heifers!



BCLR Freedom U143

THSF Freedom x KenCo Powerline

EPDs: 5 3 48 91 6 3 27 -0.09 0.01 0.53 99 66



BCLR Crockett U511

LBR Crockett x WHF Desperado

EPDs: 4 4 47 79 4 -4 19 -0.02 0.19 0.42 106 66



BCLR Showdown U240

TNT Showdown x THSF Freedom

EPDs: 6 2 41 78 5 5 25 0.07 0 0.22 94 62



BCLR Gunner U815

TNT Gunner x THSF Freedom

EPDs: 8 3 39 73 6 8 28 0.11 0.08 -0.02 98 63



BCLR Invasion U82-3

Triple C Invasion x SAC Mr. MT

EPDs: 8 1 26 48 0 8 21 -0.01 0.28 0.1 109 61



JSF Peacemaker U145

THSF Freedom x Lazy S Red Shocker

EPDs: 5 2 46 85 7 3 26 -0.04 0.01 0.32 96 66

Doug Bichler • Linton, ND: 701-254-4306 or 701-226-4068 cell
Jeff Johnson • Alberta, MN: 701-371-4141 cell

THANK YOU to all bidders and buyers at the ND State Simmental Showcase Classic Sale. The following breeders added Bichler/Johnson Females to their herds: Northern Plains Simmentals, Don and Elizabeth Neshem, Katie Henke, Schmidt Simmentals, Triple H Simmentals, and Sys Simmentals. Watch for these females in their programs in the future!

Vision XI

Simmental & SimAngus Sale

Featuring 120 Exceptional Lots!

65 Bulls (Black bulls will be DNA tested for coat color)

55 Females

February 15, 2009

1:00 pm • At the Farm

For online catalog, visit:

www.rydeenfarms.com



U3 • Sire: Shear Force • 205 WT: 787



U23 • Sire: Shear Force • 205 WT: 935



U28 • Sire: Beefmaker • 205 WT: 847



U42 • Sire: Luckyman • 205 WT: 798



U54C • Sire: Crockett • 205 WT: 920



U57 • Sire: Dewtime • 205 WT: 791



U62 • Sire: Rambler SimAngus • 205 WT: 861



U94 • Sire: Crockett • 205 WT: 896



U112 • Sire: Black Diamond • 205 WT: 775

Rydeen Farms

Clearbrook, MN

(218) 776-3338 • (218) 280-1916 • rydeen@gvtel.com

Ruffy Brook Simmentals • (218) 776-3457

North Dakota Simmental Association Classic Sale Results

December 20, 2008 - Farmers Livestock Exchange Bismarck, ND

Sale Manager: Thomas Livestock Services, MT

Sale Consultant: Doug Parke, KY

Auctioneer: Tracy Harl, Hastings, NE

Number	Category	Average
29	Bred Heifers	\$2297
29	Open Heifers	\$1786
3	Yearling Bulls	\$3250
8	Embryos	\$175
50	Unit Semen	\$40.00/unit



Top Selling Lots

Lot 48 \$5500

KS Ariela U432

A 2/16/08 open daughter of TNT Gunner N208

Consigned by: Kenner Simmental Ranch (Erika Kenner) of Leeds, ND

Purchased by: Larry and Michelle Tourdot of Reedsburg, WI

Lot 5 \$4750

THSR Tyra T734

a 1/21/07 daughter of TJ 57J The Gambler bred to GWS Trademark

Consigned by: Triple H Simmental of Hannaford, ND

Purchased by: Clearwater Simmentals of Milan, IN



Lot 6 \$4600

JSF K254Y

a 1/03/07 daughter of Winchester HR P8315 bred to Wheatland Red Teddy

Consigned by: Johnson Simmental Farm of Alberta, MN

Purchased by: Aufforth Northern Plains Simmental of Bowbells, ND



Lot 8 \$4500

THSR Trudie T237

a 1/18/07 daughter of Winchester HR P8315 bred to Wheatland Red Teddy

Consigned by: Triple H Simmentals of Hannaford, ND

Purchased by: SRF Simmental (Roger & Susan Finke) of Berthold, ND

Lot 55A \$4500

BCLR Miss Ursula U813

an open 2/27/08 daughter of Triple C Invasion R47K

Consigned by: Bichler Simmental of Linton, ND

Purchased by: Triple H Simmentals of Hannaford, ND



North
Dakota
Simmental
Association

Classic
SALE

Thanks for attending!

Sys Simmentals

First Annual Limited Auction Bull & Female Sale

February 18, 2009 • At the Ranch

Bids close at 1:00 pm CST • Call for details

**Selling 35 Powerful Simmental & SimAngus Bulls
10 Fancy SimAngus Commercial Open Heifers**



820

Sire: TNT Gunner
Dam: SYS Miss NoPhalt R509
BD: 1-19 BW: 98 WW: 792



833

Sire LBR Crockett
Dam: SYS Sundance J 915
BD: 1-25 BW: 93 WW: 806



841

Sire: TNT Gunner
Dam: SYS Miss Reality N390
BD: 1-27 BW: 94 WW: 777



802

Sire: Leachman 600U
Dam: SYS Miss Traveler S661
BD: 1-10 BW: 85 WW: 831



805

Sire: SAV 8180 Traveler 004
Dam: KS Kylie M128
BD: 1-13 BW: 91 ET WW: 787



233

Sire: SYS/Kappes Detonator
Dam: 233
BD: 2-23 BW: 100 WW: 721



849

Sire: ES Dakota
Dam: SYS Goldmine R503
BD: 2-1 BW: 93 WW: 833



824

Sire: SAV 8180 Traveler 004
Dam: SYS's Black Classic
H826
BD: 1-20 BW: 80 WW: 750

**Sys
Simmentals**

Gary & Derek Sys

9400 205th Avenue SW

Douglas, ND 58735

701-722-3244

sys@srt.com

BREEDING FOR THE FUTURE

11th Annual Production Sale
Wednesday, February 11, 2009



CDI 151U

Lucky Deal x Shear Force
EPDS: 9 1 42 82 8 7 28
BW: 99 • WW: 831 • BW Ratio: 100 • WW Ratio: 112
A top performing Deal son that has been a favorite all along. Has tremendous spring of rib and muscle expression. Homozygous Polled and Homozygous Black.



CDI 145U

Dr Atkins x Shear Force
EPDs: 9 3 43 72 2 7 28
BW: 106 • Adj WW: 884 • BW Ratio: 93 • WW Ratio: 119
A dark red powerhouse that was #1 for Adj WW and out of another top producing SF daughter. An outcross to most red genetics. Non-Diluter and Homozygous Polled.



WS Time Out U35

WS Beef Maker x Cactus Red
EPDs: 7 0 42 60 1 5 27
BW: 89 • Adj WW: 854 • BW Ratio: 105 • WW Ratio: 113
Non-diluter with outstanding birth to weaning growth and maternal. Homozygous Polled.



CDI 174U

NF Trump x Shear Force
EPDs: 9 3 40 67 4 6 26
BW: 112 • Adj WW: 843 • BW Ratio: 87 • WW Ratio: 114
Sired by our exciting new herdsire, NF Trump. He has the depth, top and muscle that is consistent in Trump progeny. A powerful group of Trump sons will sell! Homozygous Polled.



WS Invader U14

Invasion x Dream On
EPDs: 9 0 31 57 4 8 24
BW: 90 • Adj WW: 816 • BW Ratio: 101 • WW Ratio: 104
Picture-perfect baldy with great cow family. Granddam is 15 years old.
Homozygous Polled and Homozygous Black.



WS Transformer U19

Powerline x Hart Four Lane
EPDs: 3 1 42 80 4 8 29
BW: 89 • Adj WW: 855 • BW Ratio: 105 • WW Ratio: 109
Solid black that is as long as a train car.
Excellent cow family with top carcass traits.
Homozygous Polled Red Carrier.



CDI 156U

Shear Force x Horizon
EPDs: * -2 40 74 * 12 32
BW: 86 • Adj WW: 826 • BW Ratio: 108 • WW Ratio: 111
Our standout SF son of the year. His fancy Horizon mother and carcass EPDs only complete the package!
A definite herd sire prospect. Homozygous Polled and Heterozygous Black.

C Diamond Simmentals



Neil Nicholson Family
4720 34th Ave SE
Dawson, ND 58428
Home: 701-327-4438
Cell: 701-391-6205
www.cdiamondranch.com

Wilkinson Farms Simmentals

Terry & Cathy Schlenker Family
7649 49th St. SE
Montpelier, ND 58472
Phone: 701-489-3583
Aaron Cell: 701-269-8271
Email: eatbeef@daktel.com



Visitors welcome!

We request no Friday night or Saturday calls, please.



WS Barn Burner U13

WS Beef Maker x Starlight
EPDs: 6 0 49 77 1 2 27
BW: 87 • Adj WW: 859 • BW Ratio: 107 • WW Ratio: 113
Non-diluter that is one of the best we've ever raised.
Power house that is in the top 2% of the breed for weaning and yearling weight.



Sire: WS Beef Maker

Wilkinson Farms will offer several choice lots of its top heifers sired by WS Beef Maker, TNT Gunner, Hook's Shear Force and more.



Ellingson Dynamite U877
 TNT Dynamite Black L137 x Black Joker
 EPDs: 5 4 54 93 1 1 28
 BW: 104 • Adj WW: 982 • Adj.YW: 1,565



Ellingson SHR Force U805
 Hooks Shear Force x Powerline
 EPDs: 12 0 34 64 3 9 26
 BW: 93 • Adj WW: 879 • Adj.YW: 1,574



Ellingson Nophalt U840
 PPSR Nophalt x Preferred Stock
 EPDs: 6 4 43 80 3 2 23
 BW: 103 • Adj WW: 853 • Adj.YW: 1,434



Ellingson Gunner U829
 TNT Gunner x ER Americana 537B
 EPDs: 6 2 35 59 1 9 26
 BW: 91 • Adj WW: 850 • Adj.YW: 1,216

Looking for Performance?

Ellingson Simmental Performance Bull & Female Sale

Saturday, February 21, 2009 • 1:00 pm CST

Rugby Livestock Auction, Rugby, ND

Selling: 55 Simmental and SimAngus Yearling Bulls
 30 Open Heifers / Show Prospects

Other sires include: Dream On, Jump Start, Top Gun, Beef Maker, Crockett, Red Teddy and Traveler 004

Bulls will be ultrasounded and guaranteed breeders

for catalogs and information



Terry Ellingson & Family

Phone: 701-384-6225

5065 125th Ave. NE

Dahlen, ND 58224

email: tellings@polarcomm.com

Guest Consignors:

M&J Ranch, McCanna, ND

701-397-5724

McDonald Farms, Inkster, ND

701-248-3654

Sale Representatives:

Todd Finke • 701-240-7711

Jeff Thomas • 406-581-8859

View catalog online at:

www.simmgene.com

and

www.breedingcattlepage.com



Ellingson Nophalt U803
 PPSR Nophalt x Powerline
 EPDs: 4 2 31 64 3 7 22
 BW: 92 • Adj WW: 839 • Adj.YW: 1,438



Ellingson Pref Beef U862
 Preferred Beef x PPSR Nophalt
 EPDs: 7 4 42 82 2 6 27
 BW: 108 • Adj WW: 906 • Adj.YW: 1,452



Ellingson Hummer U838
 HC Hummer x Preferred Stock
 EPDs: 9 2 44 81 0 6 28
 BW: 99 • Adj WW: 824 • Adj.YW: 1,438



Ellingson Gunner U851
 TNT Gunner x OMF Long Cut
 EPDs: 6 2 39 66 4 5 24
 BW: 98 • Adj WW: 839 • Adj.YW: 1,276

KELLER'S BROKEN HEART RANCH

Annual Sale - **TUESDAY, FEB. 17, 2009**
1 PM • KIST LIVESTOCK AUCTION • MANDAN, ND



Selling:
90 High-Performance Red & Black Simmental Bulls

80 Red & Black Simmental Heifers



KBHR U060

Sire: Top Gun Dam: KBHR N150
 Adj. WW: 833 • EPD'S: 8 1 50 88 2 6 31



KBHR U235

Sire: Dream On Dam: KBHR L162
 Adj. WW: 767 • EPD'S: 9 2 36 63 5 7 25



KBHR U061

Sire: Field Day (Red Angus) Dam: KBHR M047
 Adj. WW: 760 • EPD'S: - 1 29 64 - 8 23



KBHR U117

Sire: ESN5303 Dam: KBHR R169
 Adj. WW: 808 • EPD'S: 10 2 44 78 7 14 36



KBHR U189

Sire: Top Gun Dam: KBHR L310
 ADJ WW: 808 • EPD'S: 4 3 44 76 4 9 31



KBHR U230

Sire: Top Gun Dam: KBHR N151
 ADJ WW: 830 • EPD'S: 6 3 56 93 4 6 34



KBHR U208

Sire: Desperado Dam: KBHR N166
 ADJ WW: 808 • EPD'S: 8 0 45 69 3 0 23



KBHR U231

Sire: Network Dam: KBHR K049
 ADJ WW: 785 • EPD'S: 7 3 39 70 3 11 30

"Simmental Beef on the Cutting Edge!"



Dwight & Susan Keller Family • Luke, Jake & Tess • Eugene and Helen Keller
 kbhr@westriv.com • 1573 Co. Road 136 • Mandan, ND 58554
 (701) 445-7350 • Cell: (701) 471-5215 • (701) 471-1142
www.kbhrrsimmental.com

Bata Brothers/Olafson Brothers

Joint Simmental Bull and Female Sale

February 10, 2009 • 1:00 PM CST

Sale location: Rugby Livestock Auction, Hwy. 2 West, Rugby, North Dakota

• Visit our website at: www.bataolafson.com for updated information and videos •

Selling: 66 Yearling Bulls
66 Bred Heifers
5 Two-year-old Bulls

This auction will be broadcast live at www.edjecast.com.
Real time bidding will be available via the internet.



Our sale is well-known for our quality females. 66 Bred Heifers like this one will sell on February 10th.



BF N324 Triathlon

EPDs: 4 3 43 91 8 10 32
Our Senior herdsire at OLF stamps his calves with eye appeal, style, and growth. Many sons and daughters sell on February 10th.



TNT Top Cut P274

EPDs: 4 4 71 128 4 3 38
Selling 19 black and red sons of the #1 growth bull in the breed.



BBS Top Gun U2

Proj. EPDs: 6 1 42 67 1 6 27
TNT Top Gun R244 x BBS Black Beauty J106
BW: 92 lbs. • Adj. WW: 756 lbs.
2 ET brothers sell (1 Red, 1 Black). Most bulls tested for Homozygous Polled.



BBS Canadian Cut U65

Proj. EPDs: 4 4 68 122 4 5 40
TNT Top Cut P274 x BBS Miss Canadian N8
BW: 91 lbs. • Adj. WW: 881 lbs.
Our top WW bull. A breed topping 122 Yearling EPD.



BBS Top Cut U204

Proj. EPDs: 4 2 53 93 2 7 34
TNT Top Cut P274 x BMS Miss Mumbo K3
BW: ET • Adj. WW: 763 lbs.
4 ET mates sell (2 black, 2 red).
All Homozygous Polled.



BBS Max U212

Proj. EPDs: 4 3 51 81 2 7 32
BBS Max S39 x TNT Miss Brit K125
BW: ET • Adj. WW: 789 lbs.
6 black ET mates sell. Sire topped our 2007 sale. 20 ET bulls in the offering.

Auctioneer: Tracy Harl

SALE DAY PHONE:
701-776-6393

Reference Sires:

Preferred Beef • BBS Redeye P35
PPSR Nophalt • TNT Top Cut • TNT Top Gun
BF P465 Coach • BBS Redneck M25
BBS Max S39 • E. Legacy M229 • NLC Patriarch
BF N324 Triathlon • TNT Gunner • Dream On
Meyer's Redline • KF Red Dove R130



OLF Olie U5

E.Legacy M229 "Olie" x OLF Lady Triathlon S655
Proj. EPDs: 9 -1 42 74 3 6 27
BW: 86 lbs. • Adj. WW: 797 lbs.
His Sire, "Olie", sold in our 2003 sale and is now at ABS.



OLF Triathlon U123

BF N324 Triathlon x OLF Miss Perfector M304
Proj. EPDs: 6 2 36 73 5 8 27
BW: 99 lbs. • Adj. WW: 733 lbs.
Triathlon calves have style and eye appeal and performance.

Many bulls are being tested for Homozygous Polled
View our catalog online at: www.simmgene.com.



BATA BROS.
SIMMENTAL CATTLE
6322 Highway 35
Adams, North Dakota 58210
Joe — 701-944-2732
jpbata@polarcomm.com

Olafson Brothers
SIMMENTALS
Performance
Predictability
Personal Service

Curtis Olafson
13043 84th St. NE
Edinburg, ND 58227
701-993-8240 or 8450
colafson@polarcomm.com
www.bataolafson.com

HAAS

Simmental Sale

Monday

February 9, 2009
1:30 pm CST

Kist Livestock Auction • Mandan, ND
Sale day phone: 701-663-9573

Selling
60

Outstanding
Performance
BULLS

Half Red • Half Black
Many Non- Diluted Reds
Polled Bulls

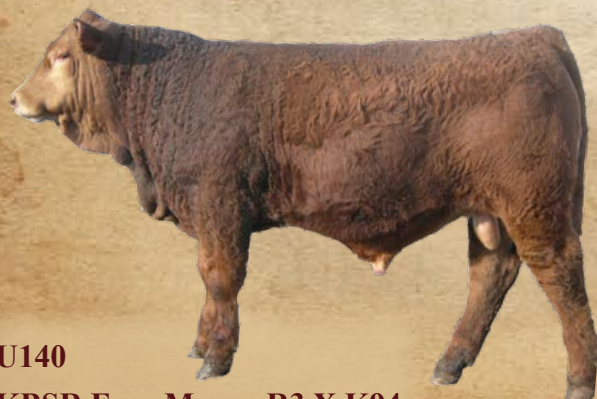
HAAS RANCH

Larry & Tom Haas
Elgin, ND 58533 • 701-584-2244

*Directions from Elgin: 8 miles south, 2 miles east,
1/2 mile south & 1/2 mile east*



U142
STR H813 Pay Day P403 X L28
EPDs: 7 3 48 85 2 6 30



U140
KBSR Easy Money R3 X K94
EPDs: 9 3 33 59 3 15 32



U84
TNT Knock Out X P63
EPDs: 5 2 44 75 0 3 25



U115
LFE Red Tanker X R140
EPDs: 6 3 44 76 2 8 30



U117
TNT Dynamite Black X J29
EPDs: 3 4 46 74 -1.6 -1.2 22



U26
TNT Knock Out X M69
EPDs: 5 2 52 88 5 2 28



MLC MS DREAM T51

CCR Mr Dream On G779R x WHF Desperado 212G

ASA# 2432446 • Purebred • Bred Heifer • Red

This heifer is bred to WS Beefmaker

CE	BW	WW	YW	MCE	MM	MWW	CW	YG	MBL	REA	API
9.3	0.5	40.0	71.1	2.7	4.0	24.0	-1.9	-0.08	0.20	0.22	119.1

Ridin for the Brand
 February 20, 2009 • Bismarck, ND
 180 Simmental & Sim-Angus Bulls
 100 Bred & Open Females



WS Beef Maker x Pelton Powercat

ASA# 2449214 • 205 Adj - 776 • Purebred • Red

CE	BW	WW	YW	MCE	MM	MWW	CW	YG	MBL	REA	API
7.2	1.7	46.3	75.7	3.7	2.9	26.0	9.5	0.01	0.32	0.25	124



Nueta Legacy A06 x Remington Red Label HR

ASA# 2456111 • 205 Adj - 851 • 1/2 SimAngus • Black

CE	BW	WW	YW	MCE	MM	MWW	CW	YG	MBL	REA	API
0	3.4	52.7	94.6	0	2.8	29.1	23.6	0.31	0.17	-0.28	86



Wheatland Red Teddy x FR Result

ASA# 2454843 • 205 Adj - 747 • Purebred • Red

CE	BW	WW	YW	MCE	MM	MWW	CW	YG	MBL	REA	API
5.6	-0.5	30.8	53.9	1.7	9.5	24.9	-6.3	0.01	0.02	-0.14	94



ES Dakota x Bon Veiv New Design 878

ASA# 2452265 • 205 Adj - 831 • 3/4 Sim-Angus • Black

CE	BW	WW	YW	MCE	MM	MWW	CW	YG	MBL	REA	API
0	2.5	52.6	98.7	0	3.5	29.8	25.0	0.15	0.22	0.09	103

Ron & Susie Pelton
 Halliday, ND (701) 548-8227
 E-mail: pelsimm@ndsupernet.com

Justin & Carrie Deckert
 Arena, ND (701) 943-2477
 E-mail: dsrcows@bektel.com

Wade & Merri Staigle
 Center, ND (701) 794-3351
 E-mail: mandanlakeranch@westriv.com

Kevin & Cody Hansen
 Ryder, ND (701) 758-2571
 E-mail: hrsimm@restel.net

Begger's Diamond V Ranch

Big Sky Genetic Source Bull Sale

Wednesday, February 4, 2009

At the Ranch, Wibaux, MT • 12:30 p.m.

Directions: 4.5 miles south, 1.5 miles east, 2.75 miles south of Wibaux.



The BLACK Simmental bulls we produce are loaded with capacity and fleshing ability.

We were one of the first ranches in the nation to breed Black Simmentals and know what it takes to keep them black. Our bulls won't have white feet and tails. They won't throw spots and they will sire solid colored calves. Many of these bulls are homozygous black and polled.

Our cattle are culled hard for structure, disposition and eye appeal.

They calve easy and are bred to be maternal, have performance, feedlot efficiency and carcass value.

These bulls will add value and pay weight to your Angus cattle. All the data leads toward a crossbred animal in the pasture, in the feedlot and on the rail. With the cost of production, an extra \$50 to \$100 a head will surely make a difference.



Our halfblood Simmental Angus Optimizers are powerful. You can be assured these bulls are deep and thick, they will complement your breeding program. They will sire feeder calves that will keep your calf buyer coming back for more. You will want to retain the heifers as brood cows, because they will be the profit making kind. Now is the time to add efficiency and value to your breeding program. You will be able to choose from the breed's top Simmental and Angus genetics combined to offer elite calving ease, exceptional growth and superb efficiency in the pasture, in the lot, and on the rail. These bulls are culled for disposition, conformation and quality, only the best will sell.



Our Angus bulls will take no back seat to any program anywhere. If you like Angus cattle that are moderate framed with extra capacity and big rear ends, come take a look. These bulls are the kind that calve easy, grow fast, and keep their condition. Our customers say they won't melt and fall apart like so many seem to do, they are sired by some of America's finest Angus sires. Their dams are big ribbed, deep bodied brood cows, that have excellent udders and are problem free.



We offer a powerful group of fall calved 18-month-old bulls. They are born on the range, developed on the range and then weaned in March. By June they go back out and are foraged developed, they don't come back to the pens until November. They are big, stout, and athletic, they are ready to work and will stay together, they will be the cowman's kind.

This fall we calved 127 cows out on the range, we checked them once a day to tag and weigh the calves, we never saw a calf born. There were 27 first calvers in the mix and everyone calved in the pasture just like the mature cows. We can do this because we are confident that our cattle are the kind that reduce calving difficulties, but still maintain the genetics that grow fast and wean heavy. You will wear out a good pickup trying to find a set of cattle that can improve your bottom line any better.

140 Simmental and Angus Bulls Sell

- 50 Halfblood SimAngus Optimizers
- 30 Angus Bulls
- 65 Black Simmental Bulls
- 7 Red Nondiluters
- 50 Fall born 18-month-old bulls
- 25 Bred Heifers AI'd to Angus Bulls
- 15 3 and 4-year-old Cows

Bulls are 6 to 7 Frame:

- Bred for calving ease, fast growth, efficiency, maternal and carcass quality.
- Bulls are developed for ranchers on a high roughage ration with very little starch and plenty of exercise.
- Every bull has an efficient hard working mother that does her job in the tough environment eastern Montana dishes out.
- All bulls are polled and solid colored.
- Many are Homozygous Black

Contact us for a catalog and web information.

Simmental

BEGGER'S

Angus

242 Last Chance Trail
Wibaux, MT 59353
Bill Begger (406) 795-8148
Jerry Begger (406) 796-2326
Bob Begger (406) 796-2380
Email: darbegger@yahoo.com



"Mark of Performance"

Traxinger Simmentals

PRIVATE TREATY BULL SALE

February 16, 2009 • At the Farm • Claremont, SD
Selling 45 RED and BLACK Simmental and SimAngus Bulls



WS Dakota Rose
owned by Spring Creek Simmentals
and Sun Rise Simmentals

ET calves by Remington Red Label, LBR Crocket, TNT Gunner and Dream On -
Both RED and BLACK!

Other Sires Represented: THFS Freedom, LCHM Hoosier, LRS Headliner, KS
Bravado and SV Northwest Figures.



"Mark of Performance"

Traxinger Simmentals
Mike & Terri Traxinger
11409 411th Avenue
Claremont, SD 57432
605-294-5812
605-294-7227 cell
mtrax@nvc.net

From Head to Tail ... Maternal to Rail ...

Klain Simmental Has You Covered!



KSR Colonel 488U

Feb. 21 • 86 lbs • 723 lbs • Rob Roy x Sarge F6039 • Pld
 CE BW WW YW MCE MM MW CW YG MB
 0 .1 28 54 0 6 20 -5 -.03 -.02
 A super 3/4-blood son of Rob Roy. He is a twin to bull 489U who is also in the sale.



KSR Premium 544U

March 1 • 92 lbs • 780 lbs • Armistice x Brando • Pld
 CE BW WW YW MCE MM MW CW YG MB
 10 0 40 64 7 8 28 0 .04 .14
 Premium is a stand out in any pen – EPDs, carcass, length, strength in calving ease and top growth.



KSR Rimfire 11U

Feb. 27 • 100 lbs • 751 lbs • Thumper x Festus • Pld
 CE BW WW YW MCE MM MW CW YG MB
 2 4 43 74 -1 4 25 10 .16 .08
 A thick, dark red, strong-topped bull. A non-diluter and growth bull from an elite cow with excellent maternal and carcass EPDs. Must see to appreciate!



KSR Infiniti 780U

Jan. 1 • 84 lbs • 838 lbs • Preferred Value x Dream On • Pld
 CE BW WW YW MCE MM MW CW YG MB
 9 1 38 63 4 5 24 1 .02 .25
 The Preferred Value calves are super! Take a look at Infiniti's EPDs – superb!



KSR Cyclone 154U

Feb. 27 • 98 lbs • 762 lbs • Total Pkg x Blk Irish Kansas • Pld
 CE BW WW YW MCE MM MW CW YG MB
 9 0 40 71 7 2 21 6 .10 .16
 A dark red, super son of Total Package. Here's a real curve bender, non-diluter bull with carcass and maternal.



KSR Hummer 728U

March 3 • 88 lbs • 737 lbs • Hummer x Dream On • Pld
 CE BW WW YW MCE MM MW CW YG MB
 12 0.2 39 70 3 3 23 4 -.01 .35
 Born from a first-calf heifer, he has an excellent pedigree, calving ease and a long, smooth shoulder. Note his 0.35 Marbling EPD.

27th Annual Production Sale
Saturday,
Feb. 7, 2009

12:00 pm CST

Private Treaty Sale at Ranch

Lunch Served at 11:00 am

13 mi. N. of Turtle Lake or 10 mi. S. of Ruso
 on Hwy #41 to County Road #6, then 1 mi. E.

Selling:

40 Yearling Simmental Bulls (21 black, 19 red) • **10** Open Females
 37 Years Performance Testing • 13 Years Ultrasound Testing

Uniformity from Us Creates Uniformity for You!



KLAIN SIMMENTAL RANCH

Durnell, Darcy, Tyler, Dalcyce and Trey Klain
 (701) 448-2408 • 1364 20th St NW • Ruso, ND 58778

Scenes from the NDSA Annual Meeting & Banquet



Sale Manager Jeff Thomas address' the banquet hall



Rick Funston from the University of Nebraska was the featured speaker at the Annual Meeting.

*Congratulations
to all the Award
Winners at the
2008 Banquet!*



ND Junior Simmental Association Member of the Year, Morgan Cummings, Berthold, ND accepts her award from NDSA President Kelly Hanson.



Lynette & Kevin Thompson, Almont, ND and Jim Skillestad, Glendive, MT enjoy the Annual Banquet.



The coloring contest winners accepted their trophies.

Hope to see you there next year!

North Dakota Simmental Association Annual Banquet

Pioneer Award Winner

Bob & Sue Erickson

The word pioneer means – “lead the way” or “Break new ground”. The Simmental breed has changed so much throughout the last 20 some years, and it took pioneers who would go against the grain and try something different to make that happen. For example:

Picture it – 1991 – Ag Expo show in Minot. Angus Show was starting and the show manager came running up to this Simmental breeder and told him he needed to get that black heifer to the ring because the show was starting. So he was all excited and thought he was late only to get up to the show ring and find out his Simmental heifer could not show in the Angus Show! She was the only black Simmental heifer in the barn. Now when you take a pass through the Ag Expo stalls in Minot, you see mostly black Simmental heifers. The other neat detail about this story is that the black heifer was purchased at the first Northern Black Simmental Classic Sale.

It is hard to have the Simmental State Sale weekend without remembering back to the early 1990’s when the Northern Black Simmental Classic Sale was formed. At that time, there were only a few breeders with black Simmental Cattle. Those breeders started out going against the grain and having something different, but now it is hard to imagine the breed without the Black Simmental.

Our Association needs to thank those who paved the way for the rest of us. One of those families is the Bob Erickson family, 4E Simmentals of Plaza, ND. They have been very influential in the North Dakota Association for 28 years when they purchased their first black Simmental. Bob and Sue were part of the founding members of the Northern Black Simmental Classic Sale. There was some skepticism back then as to whether or not people should change, and now people would not think it was a difficult decision for breeders to make.

It is hard to say that you went somewhere and did not see them in attendance. Every field day, state sale, show, or junior event – they were there. They have been intense supporters of the North Dakota Simmental Association and the breed of Simmental. Now they have children and grandchildren who are continuing their hard work.

Not only did they help to start the Northern Black Classic and help get the North Dakota Association accepted on the National level, but they were also a tremendous help to the youth for many years. They would always invite the youth along with them to the Junior Regionals and really tried to expose our North Dakota young people to the national scene. They always did this out of the goodness of their heart and really tried to help others succeed.

Sue was the newsletter editor for right around a decade and she served as Secretary of the Northern Black Classic Board for many years. They have a successful bull sale each year and have now begun to turn everything over to their children.

Bob and Sue Erickson – thank you for all your dedication and forward thinking. You are great role models to the rest of us and we appreciate all you have done.



Bob & Sue Erickson
4E Simmentals of Plaza, ND
2008 Pioneer Award Winners

Promoter of the Year Award

Triple H Simmentals

This year’s ND Simmental Association Promoter of the Year Award goes to a family whose Simmental endeavor began in the early 1980’s with a purchase of a Simmental bull to breed to their herd of mostly black and black baldy cows.

Their first purebred heifer was bought in the ND State Simmental sale in 1988 from Oien Simmentals. She was big, tall, yellow and white. If you can believe that! They also bought a purebred cow that same fall.

The next year in 1989 at the ND State Sale they bought their first black Simmental bull from Dr. Delbert Clark.

They showed cattle through the boys’ high school years; then they had to take a few years off to start their own families.

They started showing again at the first North Star Classic which was nine years ago.

In 2005, they joined forces with two other Simmental operations to hold an Annual Bull Sale.

They have kids that are involved in the ND Junior Simmental Association and the ND Junior Points Show Association, who are also a very important part of the family operation when they are not playing football, basketball or hockey. They are also there to help with the daily chores, breaking cattle to lead for sales and shows and raking hay in the summer time.

Last summer was highlighted when one of their very own bred and owned heifers was named Supreme Champion at the Western Star and ND Junior Beef Expo in Williston.



Promoter of the Year
Triple H Simmentals

The kids have also taken home the honor of Junior Showmanship, outstanding Junior award and placed in the top 3 year end awards of the Simmental division in the ND Junior Point Show Association.

This year’s Promoter of the Year is Triple H Simmentals: Jerry and Sandy Hanson; Kelly, Michelle, Alyssa, Justin, Landon & Taylor Hanson; Bryan, Brandi, Zach, Braydon, & Zoe Hanson.



Auctioneer Bill Begger presides over the Fun Auction

North Dakota Simmental Association Annual Banquet

Commercial Simmental Producer of the Year

Roger Hasse

This year's recipient of the Commercial Simmental Producer of the Year Award is Roger Hasse of Tappen, ND. Roger started raising cattle while he was a member of the local 4-H chapter. When He was in his junior year of high school, his dad sold him forty Hereford heifers. They bred those heifers to Red Angus bulls. In 1971, after high school graduation, he stayed at home and helped on the family farm. The following year he purchased the neighboring farm, which was homesteaded in 1884 by his Great-grandfather Shank, from his Uncle Don. His wife and he still reside on this farm today.

In 1976, they started using Simmental bulls. They purchased those bulls from the Arnold Brothers in Mobridge, SD. They were impressed by the growth and muscling that those cattle had compared to the English breeds. After a few years, their herd became pretty much straight blood Simmental. In the nineties, they started to buy Red Angus to use on heifers to help remove some of the spots that were resulting from the Simmental influence. Their cattle are now pretty much red. Their cows are a little smaller-framed due to the Red Angus influence. They continue to use about sixty percent Simmental and forty percent Red Angus in their crossbreeding program.

After their daughters graduated from high school and left for college, a young man by the name of Jamyson Fischer, started to work for him. Jamyson has since become a partner in their operation; and, with the cattle combined, they calve out about 500 head.

Roger said Jamyson brought many good ideas with him. He started AI-ing heifers the last couple of years. This past spring they also Aled their second and third calving cows. He suggested moving their calving date for the Aled cattle to the end of February. They tried it this past spring, and although they're still unsure if they'll continue, it worked well this past spring. They still calve the older cows starting at the end of March until the second week in May. They background their calves and sell the steers in December and January. They have been keeping more replacement heifers now that they AI.

Roger Hasse



When Roger was asked about changes in the Simmental breed, he said the cattle have downsized, the color is more consistent, and there is more data available within the breed. He really likes the maternal traits of the breed.

He shared that he bought 2 or 3 bulls out of Canada many years ago from Bar 5 when the breed was just getting started. Roger has never used a half blood bull, but prefers to use purebred bulls and feels he gets more hybrid vigor from utilizing that type of breeding program. As soon as cattle become a high percentage of Red Angus, he goes back on them with a Simmental bull.

Roger's neighbors shared the following comments:

- he's a very good manager
- he gets everything done and seems to be on top of everything all the time
- he has good cattle and is a good cattleman
- he's the first one to help if there's a problem in the neighborhood
- one neighbor said he can butcher, build house and is just plain "good at everything"!

Along with some farming of small grains, raising cattle and, and, now, a couple of granddaughters, Byrlin and Nia, they keep busy. They are blessed with good family, neighbors and friends and are thankful all the Lord has provided to them.



2008 NDSA Banquet



2008-2009 NDSA
Board of Directors

KOEPLIN'S BLACK SIMMENTALS

Annual Production Sale

TX Tuesday, February 3, 2009 TX

2 pm CST • Kist Livestock Auction, Mandan, ND

SELLING 50 Black & 3 Red Yearling Bulls



ALL STAR x LUCKY BREAK
EPDs: 9.5 2.8 47.6 76.7 4.1 6.5 30.3
Oct 5 weaning weight of 966 pounds!
9 All Star sons selling!



ABOVE PAR x NICHOLS BLACKADVANTAGE
EPDs: 5.2 2.9 33.8 61.2 -2.7 -2.3 14.6
Oct 5 weaning weight of 780 pounds!
5 Brooks Above Par sons selling!



HUSTLER x HIGH RIDGE SOLID STATE
EPDs: 11.6 1.6 43.1 67.0 4.1 -4.4 17.1
Oct 5 weaning weight of 778 pounds!
7 sons of Hustler to sell!



LECC DICE x NOPHALT
EPDs: 6.8 2.4 35.3 66.4 3.2 1.6 19.2
Oct 5 weaning weight of 744 pounds!
3 sons of LECC Dice selling!

Also selling 4 Hummer sons, 5 sons of Positive Power and 1 Nophalt son as well as several other sires!

Terry & Marci Koeplin
104 4th Ave. NE
Elgin, ND 58533
701-584-3292
Cell: 701-214-8212
koeplinranch@westriv.com

Where Friends Meet!
Visitors always welcome
at the ranch!

Badger & Kristine Koeplin
1057 Picador Way
Billings, MT 59105
Cell: 701-367-5890
badgerkoeplin@hotmail.com

KJELGAARD SIMMENTALS

"PARADISE BULL SALE"

SELLING: 65 COMING TWO-YEAR-OLDS

- 15 Purebred Red Simmentals
- 25 Purebred Black Simmentals
- 10 Percentage Red SimAngus
- 15 Percentage Black SimAngus

"NEW SALE DATE!"

"NEW LOCATION!"

FRIDAY, JANUARY 30, 2009

1:00PM CST • AT THE RANCH



T13 Gunner ~ BW-98 Adj.WW-782

EPDs	3.9	4.2	46.3	76.1	1.3	3.5	26.7
------	-----	-----	------	------	-----	-----	------



T35 Leland ~ BW-73 Adj.WW-808

EPDs	X	-2.5	24.9	54.8	X	5.9	18.4
------	---	------	------	------	---	-----	------



T70 Five Star ~ BW-101 Adj.WW-870

EPDs	2.7	4.1	60.8	102.9	2.3	1.6	28.8
------	-----	-----	------	-------	-----	-----	------

*Call for
Catalog Requests!*

Bruce Kjelgaard: **701-785-2815**
Michael Kjelgaard: **701-785-2266**

KJELGAARD SIMMENTALS
1589 95th Ave NE
McHenry, ND 58464

JAMES CREEK SIMMENTAL

Your northern source for Fleckvieh genetics

6th Private Treaty sale begins February 3, 2009, 1pm at the Farm!

- All bulls sired by Full Fleckvieh bulls
- Excellent bulls by: MFI Whistler, Arnold's Image, LS Legacy, Porterhouse Regent, JCS Siegfrieds Image and Brink Security

SALE FEATURES

Performance and carcass data will be available after January 25. Check out all of the bulls on our website. For more information on the bulls call or stop by.



U503 - 518 Fleckvieh

First bull from 'Security' to sell. Super calf from a 2nd calver. The 503 cow is following in her mothers footsteps.

Adj. WW-749

EPD's: -5, 7, 59, 87, -6, 3, 33



U415 - Polled, Black, 718 Fleckvieh

Embryo from Hofmann Simmentals renowned 96L and Porterhouse Regent

Adj. WW-656

EPD's: 1, 3, 33, 57, -2, 10, 27

HEATHE & HOLLY WIDICKER

4664 Main St. • Heaton, ND 58418

701-984-COWS (2697) • jcscow@daktel.com

www.jamescreeksimmental.com



8th Annual Bull & Female Sale

Uppin' the Ante

Friday, February 6, 2009 • 1 pm CST
Farmer's Livestock Exchange
Bismarck, ND



U17

Born: 01/08

STF Affirmed P44R X Ellingson Blk Perfector



U810

Born: 03/08

STF Affirmed P44R x ER Mackfrid 550B

SELLING:

- 45 head yearling Simmental and SimAngus Bulls
- 15 head Black Sim-Influenced Open Heifers by Sorenson Ranch

Wintering and Delivery Available on Bull Offering

EPDs, Performance and Ultrasound Data will be available

C/K Simmentals

Kelly & Cheyanne Erickson
6219 39th St. NW
Plaza, ND 58771
(701) 497-3749
(701) 898-1583
simbeef@rtc.coop

4E Simmentals

Shane, Jennifer and Drew Erickson
PO Box 147, Plaza, ND 58771
Shane_jen@live.com
701.497.3558
701.898.1216
Robert 701.497.3381
Kipten 701.898.1215

AI SIRES REPRESENTED:

- STF Affirmed P44R
- Bar CK Vision
- KSU Venom
- TNT Hummer H3
- LR5 Big Country
- LBR Crockett
- Triple C Positive Power

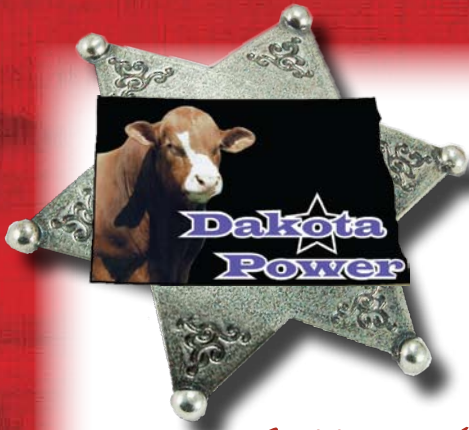
**The 2009
North Dakota
Simmental Directory**

**Be sure to contact
Todd Finke at
701-240-7711
or
todd@edje.com
to secure your
advertising space today!**

Ad Deadline March 1, 2009!

Thank You, I would like to thank the North Dakota Simmental Association and fellow ASA members for the support and encouragement to run for the ASA Board of Trustees. Thank you for the help and assistance.

*Sincerely,
Roger Finke*



DAKOTA POWER

SIMGENETICS BULL SALE

Monday, February 16, 2009 • Valley City, ND
Valley City Winter Show Building • 1:00 PM CST

Selling 62 powerful yearling SimGenetic bulls



1/2 Blood:
Goldmine
x Heavy Design



3/4 Blood:
Dream On
x Kilowat



3/4 Blood:
Dream ON
x 878



Pureblood:
Powerline
x Magnum



1/2 Blood:
Alliance 187
x Fortune-500



Pureblood:
Dream On
x Transfusion

TRIPLE H SIMMENTALS

Kelly, Bryan & Jerry Hanson
701.797.7169 or 701.789.0655

BLACK TIE SIMMENTALS

Pat and Lori Thorson • Tim and Tam Clark
701.371.8230 or 701.799.7752

PERSON SIMMENTALS

Mac Pherson
701.680.1476

KENNER SIMMENTAL RANCH

Headed in the Right Direction



**Join us
February 14, 2009**

**Farmer's Livestock, Bismarck, North Dakota • 1:00 PM
Selling 100 Bulls and 50 Bred Females
Red and Black Simmental and SimAngus**



KS Gemini U68

DRS J91 Outback 604S x ER Black Cisco
EPDs: 7 0 44 73 3 7 29



KS Saturn U390

TNT Dynamite Black x Boz Redcoat
EPDs: 5 4 52 85 5 2 28



KS Sirius U950

TNT Dynamite Black x KS Kayla (Pref. Stock)
EPDs: 6 3 46 79 2 6 29

Contact us for more information:

KENNER
SIMMENTALS



Roger, Jeanette, Erika & Brett Kenner
5606 57th St NE
Leeds, North Dakota 58346
Phone 701-466-2800
Erika 406-581-1188
rakenner@gmail.com
Herdsmen: Bryan Leapaltd
701-466-2553 • 701-739-8764 Cell
www.kennersimmental.com



KS Venus U180

TNT Gunner x KS Shania (Red Light)
EPDs: 8 0 36 65 3 12



KS Tina T950

SAV Net Worth 4200 x 600U
EPDs: - 1 40 83 - 12 32
SimAngus Bred Female —
All bred to Ellingson Legacy (Olie).

Sale Consultants:

Archie Fleming - 903-586-8505
Brian Bouchard - 403-813-7999 (c)